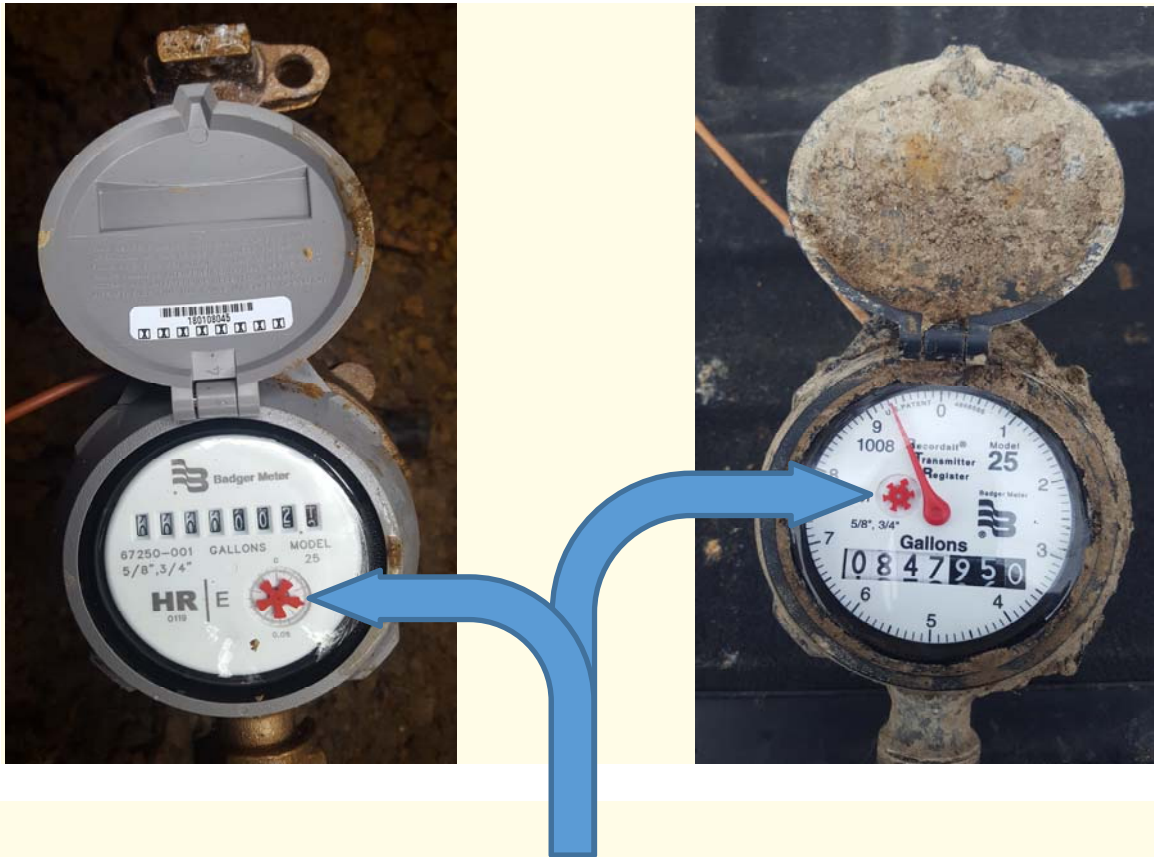


## Use your water meter to check for leaks

A good way to determine if you have a leak in your plumbing system, is by first checking your water meter which is generally located at the edge of your property near the road. If you do not know where your meter is located you can call the Office at (931) 692-2505.

1. Make sure **no** water is being used inside or outside of your house.
2. Locate your water meter and check the leak indicator to see if it is moving. The leak indicator is a small "snowflake" shaped dial that rotates when water is flowing through the meter. If the dial is moving, chances are, you have a leak.
3. Or, you can also take a meter reading and wait 1 or 2 hours and take another meter reading (make sure no water is used during this time). If the reading has changed, you have a leak. Alternatively, you may take a meter reading before going to bed, use no water during the night, and take another meter reading as soon as you get up. If the reading has changed, you have a leak.



LEAK DETECTOR

After you have determined that you have a leak, the next step is to determine if the leak is inside or outside of your house.

1. Locate your home's main shut off valve and shut off the water at the valve. Typically, you will find the shut off valve in the basement or garage directly behind an outdoor faucet, or outside below an outdoor faucet.
2. Again, check the leak indicator for movement or use the meter reading method, making sure not to use any water during this period. If the leak indicator stops moving or there is no change in the meter readings, then you have a leak inside of the house. If the leak indicator continues to move or there is a change in the meter readings, then the leak is outside between the meter and the house.
3. If you are unable to locate the leak, you may need to call a plumber.